

SALES:



BRISBANE (HEAD OFFICE)

40-46 Musgrave Rd, Coopers Plains, QLD 4108
P.O. BOX 529 Archerfield QLD 4108
Ph: (07) 3255 6455 Fax: (07) 3255 5568
Email: serviceqld@allensindustrial.com.au
Web: www.hazardousdustproducts.com.au

SYDNEY

3 Metters Pl Wetherill Park, Sydney NSW 2164
Ph: (02) 8072 4162
Email: servicensw@allensindustrial.com.au
Web: www.hazardousdustproducts.com.au

MELBOURNE

72 North View Drive, Sunshine West VIC 3020
Ph: (03) 9081 0172
Email: servicevic@allensindustrial.com.au
Web: www.hazardousdustproducts.com.au



BRISBANE (HEAD OFFICE)

2/44 Musgrave Rd, Coopers Plains QLD 4108
P.O. BOX 529 Archerfield QLD 4108
Ph: (07) 3277 3197
Email: serviceqld@assuredequipment.com.au
Web: www.assuredequipment.com.au

SYDNEY

3 Metters Pl, Wetherill Park NSW 2164
Ph: (02) 8103 5017
Email: servicensw@assuredequipment.com.au
Web: www.assuredequipment.com.au

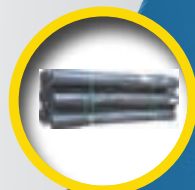
MELBOURNE

72 North View Drive, Sunshine West VIC 3020
Ph: (03) 9081 0172
Email: servicevic@assuredequipment.com.au
Web: www.assuredequipment.com.au



ASBESTOS & HAZARDOUS DUST SAFETY EQUIPMENT SPECIALISTS

- ASBESTOS
- LEAD
- MOULD
- BONDED
- FRIABLE
- SILICA
- RESIDENTIAL
- COMMERCIAL
- INDUSTRIAL





H CLASS VACUUMS	
page 1	Hazardous Dust & Asbestos Approved Vacuums - Nilfisk
page 2	Multi-Motor Hazardous Dust & Asbestos Approved Vacuums
page 3	3 Phase – Hazardous Dust & Asbestos Approved Vacuums
page 4-5	Hazardous Dust & Asbestos Approved Vacuums – Numatic
page 6	Wet Pick Up Vacs & Separator Units
page 7	Vacuum Tools, Hoses & Accessories
SURFACE PREPARATION EQUIPMENT	
page 8	Surface Preparation – Tile Chippers / Strippers
page 9	Floor Grinders & Separators
NEGATIVE PRSSURE UNITS & EQUIPMENT	
page 10	Negative Pressure Units Small – SMH500
page 11	Negative Pressure Units Medium – AMS1500
page 12	Negative Pressure Units M-Large – SMH2500
page 13	Negative Pressure Units Large – AMS4000
page 14	Negative Pressure Units Large – SMH5000
page 15	Airflow Calculation Guide
page 16	NPU Filters, Exhaust Ducting & Intake Foil Ducting
page 17	Negative Pressure Monitors, Smoke Generator
DECONTAMINATION EQUIPMENT	
page 18	Modular Decontamination Units
page 19	Water Management & Pump Filter Systems
pages 20-21	5 Stage Mobile Self Contained Decontamination Trailer
pages 22-23	3 Stage Mobile Self Contained Decontamination Trailer
Page 24	Metal Fabricated, 3 Piece Decontamination Unit
Page 25	Transit Tent Airlock System
WASTE BAGS & ENCAPSULATION CONSUMABLES	
page 26	Adhesive Tapes, Wet Wipes & Tak Rags
page 27	Adhesives, Binders, Rags & Sprayers
page 28	Asbestos Waste Bags – Approved 200um
page 29	Bulk Waste Bags – HaziBags
page 30	Poly Sheeting / Builders Film
page 31	Flame / Fire Retardant Plastic, DTEX Poly Tarp & Vision Panels
DUST CONTAINMENT	
Page 32	Dust Protection Zip Wall, Air Scrubber & Dehumidifiers
Page 33	MINTIE Dust Containment Units
ASBESTOS ABATEMENT PRODUCTS & ENCAPSULANTS	
pages 34-35	Fibrelock Asbestos Encapsulant & Binders
pages 36-37	Avail Grayling Glove Bag Systems
RESPIRATORY PROTECTION	
pages 38-41	Respiratory Protection – Sundstrom
pages 42	Respiratory Protection – Shigematsu
P42-43	Respiratory Protection – Scott
pages 44-45	Respiratory Protection – 3M
pages 46-47	Respiratory Protection – Cleanspace
page 48	Supplied Air Respiratory
page 49	Respirators Fit Testing
PERSONAL PROTECTIVE EQUIPMENT & SAFETY	
page 50	Disposable Coveralls – Type 5/6 & Flame Retardant
page 51	Overboots, Towels, Barrier Tapes & Signs
ASBESTOS SAFETY & RESPONSE KITS	
pages 52-53	Asbestos Response & Containment Kits
GENERAL PPE & SAFETY PRODUCTS	
page 54	Asbestos Wet Injection System
page 55	Hydration & Cooling & Height Safety PPE
pages 56 - 57	Workplace Safety & Other Products
H CLASS APPLIANCE SERVICING & TESTING	
pages 58-60	H Class Appliance – Service & Testing
BRANCHES	
Page 61	ALLENS INDUSTRIAL & ASSURED EQUIPMENT SERVICES BRANCHES

Hazardous Dust & Asbestos APPROVED VACUUMS



VHS42 30L H

NILFISK VHS42 30L - H Class Vacuum

INCLUDES:

- Flat Filter M Class PTFE: 107413540
- Filter Cartridge H Class/ HEPA: 107413555
- Extension Tubes - Stainless Steel (x2): 107408074
- Curved Hand Tube - Stainless Steel: 46691
- Suction Hose - Antistatic 4 metre: 107413544
- Floor Nozzle: 302002331
- Crevice Nozzle: 29541
- Tool Adaptor - Antistatic: 302000535
- Hose/Cable Hook (x2): 107415083
- Flexible Box Strap: 107413553

VHS42 40L H

NILFISK VHS42 40L - H Class Vacuum

INCLUDES:

- Flat Filter M Class PTFE: 107413540
- Filter Cartridge H Class/ HEPA: 107413555
- Safety Filter Bag: 107413549
- Extension Tubes - Stainless Steel (x2): 107408074
- Curved Hand Tube - Stainless Steel: 46691
- Suction Hose - Antistatic 4 metre: 107413544
- Floor Nozzle: 302003666
- Crevice Nozzle: 29541
- Tool Adaptor - Antistatic: 302000535
- Hose/Cable Hook (x2): 107415083
- Flexible Box Strap: 107413553

Note: All Nilfisk units run self ventilating, bypass motors that may preclude them from D.O.P. testing.



VHS120 H Class

Model No4012300029
 Voltage (V)230
 Frequency (Hz)50
 IP protection class44
 Insulation classI
 Rated power (kW)2
 Airflow without hose (m³/h - l/m)330 - 5500
 Max. vacuum (kPa - mbar)21.1 - 211
 Sound pressure level at 1.5 m (dB(A) ISO 3744)74
 Container capacity (L)-
 Main filter typeM CLASS POLYESTER WITH GLUED SEAMS
 Main filter area (cm²)16000
 Upstream HEPA H14 filter (if present) (cm²)16000
 Inlet (mm)50
 Length x width x height (cm)63x62.8x130
 Weight (kg)53
 Longopac® capacity25
 H-class hazardous dust approval Included
 HEPA (H14) upstream filtration Included
 Manual filter shakerIncluded
 Vacuum meterIncluded
 M-class filter with glued seams Included
 Longopac® systemIncluded

Hazardous Dust & Asbestos APPROVED VACUUMS

NilfiskCFM S3 N24 HC LP TYPE H

By NILFISK, the CFMS3 Haz N24 HC LP TYPE H comes Complete with DOP Certificate and TYPE 14H absolute filter and Longopac dustbag kit. It replaced both the venerable Nilfisk GS83 and GM83 and CFM137 hazardous industrial vacuum cleaners.

The solid structure of this fully modular industrial vacuum approved to EN Standard 60335.2.69 for hazardous dusts with the maximum power available from Australian power outlets.

The S3 single-phase vacuum cleaners are designed to meet hazardous dust safety standards, featuring absolute HEPA filter H14 for the collection of very fine or toxic dust, and filter shaker, and an electronic keypad with LED indicators to monitor performance of the main and HEPA filters.

It is supplied complete with DOP Certificate and Nilfisk hose kit.





Hazardous Dust & Asbestos

APPROVED VACUUMS

ALL MODELS are approved to IEC & AS/NZ 60335-2-69 "Household and similar appliances - Safety - Part 2-69: Particular requirements for wet and dry vacuum cleaners, including power brush, for industrial and commercial use"

NUMATIC HZ370

A new design with improved features see this unit continue to see Numatic H Class Vacuums being the unit of choice in the Australian market.

The HZ370 model will replace the HZQ200 and HZQ190 models in the current line up.

Some key points:

- Larger capacity for similar footprint, now a 15ltr capacity.
- Exclusive to Aus will be the internal drum fins to provide added airflow as the bag fills thus reducing the overheating issues in extreme conditions.



WHAT'S IN THE BOX WITH THE HZ370

- 1x 604165 TRITEX FILTER FOR 305MM MACHINES
- 2x 604016 10 (NVM-2BH) HEPAFLO FILTER BAGS (MODEL 370 TYPE)
- 1x 601144 DOUBLE TAPER HOSE/TOOL ADAPTER
- 1x 601142 240MM CREVICE TOOL
- 1x 601141 DOUBLE TAPER HOSE/TOOL ADAPTER
- 1x 601101 2.4M NUFLEX THREADED HOSE (NVA-1B)
- 1x 601917 280MM STAINLESS STEEL GULPER/SCRAPER TOOL (NVA-17B)
- 2x 601008 422MM LONG X 32MM O/D STAINLESS STEEL EXTENSION TUBE
- 1x 601923 DOUBLE TAPER STAINLESS STEEL BEND WITHOUT VOLUME CONTROL (422)
- 1x 900918 MFB 300 - 32MM MULTIFLO BRUSH 300MM FLOOR NOZZLE
- 1x 908340 DRUM LINER (390 DRUM WITH LOW NECK)

HZD570 DUAL MOTOR

The revised HZD570 by Numatic features a new inner tub design that uses a finned insert to provide improved airflow as the bag fills.

Designed for the fine dust market and when used with the Numatic Microflow dust bags the gives you the ultimate in fine dust capture with Numatic's renowned reliability and easy servicing.

WHAT'S IN THE BOX FOR THE 570'S

- 1x 604116 SECONDARY PERMATEX FILTER FOR 356MM TWO STAGE MACHINE (NVM-13B)
- 2x 604017 10 (NVM-3BH) HEPAFLO FILTER BAGS (MODEL 570 TYPE)
- 1x 601144 65mm SOFT DUSTING BRUSH
- 1x 601142 240MM CREVICE TOOL
- 1x 601141 DOUBLE TAPER HOSE/TOOL ADAPTER
- 1x 601101 2.4M NUFLEX THREADED HOSE (NVA-1B)
- 1x 601917 280MM STAINLESS STEEL GULPER/SCRAPER TOOL (NVA-17B)
- 2x 601008 422MM LONG X 32MM O/D STAINLESS STEEL EXTENSION TUBE
- 1x 601923 DOUBLE TAPER STAINLESS STEEL BEND WITHOUT VOLUME CONTROL (422)
- 1x 900918 MFB 300 - 32MM MULTIFLO BRUSH 300MM FLOOR NOZZLE



Wet & Dry PICK-UP VACUUM



VL500 75-2

The VL500 series of wet and dry vacuum cleaners is offering performance and reliability that ensure low total cost of ownership and at the same time has features making daily cleaning tasks easier, faster and safer.

VL500 is ideally suited for hotels, contract cleaners, education, exhibition and conference centers as well as public buildings, manufacturing and industrial applications. A failsafe filter design makes operation easy due to the ability to have individual wet and dry filters working simultaneously. Each filter is specific for either a wet or dry application ensuring maximum performance. With the special dual filtration system, Nilfisk VL500 can be used in whatever environment, wet or dry, without the need to change filters.

VL500 75-2

Twin Motors
75 Litre wet Capacity
Weight(dry) 27.5kg



Note: This vacuum is not a 'H' class unit and is for wet pick up only when utilised for hazardous dust removal.

Separator FOR HIGH DUST APPLICATIONS

SUPA SEPARATOR

Cyclone Pre-Separator. 50 litre capacity. The Supa Separator decreases dust load on the vacuum and increases efficiency by 400%. It reduces filter blockages and extends the life of vacuum motors, reducing replacement and repair costs. The Supa Separator suits any vacuum hose with 50mm cuff ends and is suitable for use with most dusts and liquids, including Asbestos Containing Materials.

Supa Separator

50 litre capacity



Vacuum Spare Parts & Accessories



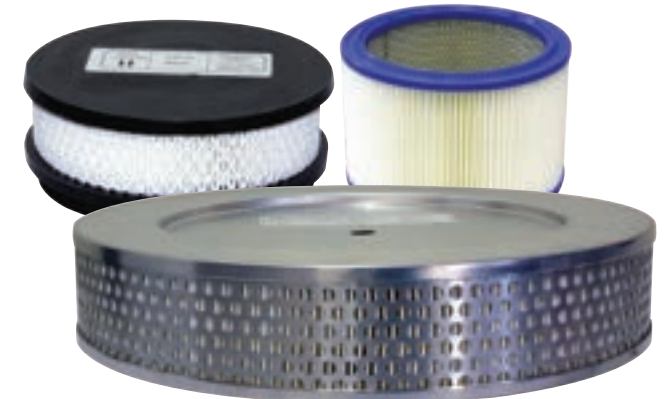
Vacuum Tools

Wands, elbows, crevice nozzles, dusting brushes & drilling tools.
Steel extension poles & wands.



HEPA Filters

For approved vacuums



Vacuum Bags

Safety bags, filter bags & liners
single box or BULK boxes



Vacuum Hoses

27mm, 32mm, 36mm, 38mm & 50mm



IDEAL FOR FLOOR GRINDING



Tile Chippers

MANUAL, PUSH & SELF PROPELLED SUIT ALL APPLICATIONS

EDCO TILESHARK TS8

240V Walk-Behind Floor Scraper. Sharktooth wrench for easy blade removal. Pinch blade system accepts floor stripper blade of any make and size. Durable, steel plate stock outer housing. EDCO'S TileShark Floor Stripper has an oscillating blade drive system that allows it to slice under the material making the removal easier and quicker. Ideal for removing vinyl tile, linoleum tile and carpeting.

Mumme

T-Handle floor scraper

Mumme

Floor scraper for general cleaning and scraping. Blade made from 316 stainless steel. Easily replaceable press-fit double sided blade for extended life. Replacement blades available in 150mm, 200mm and 300mm sizes.



Edco Tile Shark

Power: 240V, 3/4 HP
L 980mm x W 620mm
x H 1030mm
Weight: 68kg

ORANGE SOLV

IS THE BIODEGRADABLE, SAFER ALTERNATIVE

Here is an exciting new alternative to using strong petroleum, chlorinated or glycol ether solvents for your heavy duty cleaning and degreasing. ORANGE SOLV is a type of product that you have never seen work so fast on tar, ink, grease, fresh paint, adhesive or chewing gum - even graffiti can be safely removed on surfaces that are solvent resistant.

Being water soluble and very free rinsing, all surfaces are left squeaky clean and residue free with a quick cold or hot water rinse. D-Limonene, the exciting product of the future. It comes from the peel of oranges and lemons. It is low in toxicity, it is pleasant to use, it has minimal skin impact (apart from a slight defatting effect). It is biodegradable and it is produced in Australia.

PHYSICAL CHARACTERISTICS

Strong orange/citrus aroma with clear yellow colour forms a "flash" white emulsion when mixed with water.

70% D-Limonene



Orange Solv 5LT (70%)



Orange Solv 20LT (70%)



Floor Grinders

METEOR 250

250mm MkII Diamond Grinder. Aggressive direct drive grinder for removal of glue and coatings. Easy to control, compact and low noise. Floating dust shroud for effective dust control. Single phase motor, 240v. Swivel axle to allow you to get close to walls.



Meteor 250 MkII

Power: 240v - 2.2kw / 3HP
Diameter: 250mm
Weight: 64kg
L 908mm x W 401mm
x H 1060mm

Satellite 480 Triple Disk Floor Grinder

Power: 240v - 2.2kw / 3HP
Diameter: 480mm
Weight: 160kg
L 1450mm x W 545mm
x H 1005mm



Grinder-Tec Kit

Includes Metabo 2500W 5-inch or 9-inch grinder & shroud



GRINDER-TEC KIT with Metabo 2500W 5-inch or 9-inch angle grinder is perfect for corners and getting up close to the walls. The Grinder-Tec shroud is made from highly flexible polyurethane and features a standard-sized vacuum port which allows hose to lay horizontal thus reducing excessive wear to the shroud. The **GRINDER-TEC SHROUD** can also be ordered separately and suits most 5-inch or 9-inch grinders.



Grinder-Tec Dust Shroud

Suits most 5 & 9-inch angle grinders including Metabo, Hitachi & Bosch

Diamond Wheels

7-inch and 10-inch grinding wheels for a range of surfaces



SATELLITE 480

480mm Diamond Grinder for aggressive grinding, removal of glues and coating and polishing concrete. Compact with foldable handle. Vacuum port for dustless grinding. Quick disc changeover with no tools required. The Satellite 480 Generation 3 is a single phase, reliable machine that combines High Diamond Speed with well-balanced weight, making the 480 one of the most productive machines in its class. Takes 3 X 175mm Satellite discs, or 3 or 6 tapered diamond plugs. Single lifting point makes lifting the machine a breeze.

PREMIUM DIAMOND WHEELS

We stock a range of 7-inch and 10-inch grinding wheels to suit the Satellite and Meteor floor grinders.

Negative Pressure

(AIR) UNITS

Did you know?

That NPU's need to operate at 99.995% efficiency, and need to be regularly serviced & tested to maintain this.

NPU's create a pressure differential between inside and outside the enclosure where Asbestos is being removed. All Allens NPU'S are made from durable polypropylene with quality fixtures and fittings, motors and components.

FOR JOBS & ENCLOSURES REQUIRING
SERIOUS GRUNT



THE ALLENS FAMILY OF NPU'S



EACH NPU IS INDIVIDUALLY D.O.P. & AIRFLOW TESTED AT MANUFACTURE!

UNSURE HOW TO CALCULATE AIRFLOW AND WHAT SIZE N.P.U. YOU ARE AFTER?
GO TO PAGE 12 OF OUR CATALOGUE AND WE'LL SHOW YOU HOW!

Small NPU



SMH500

TECHNICAL SPECIFICATIONS

Airflow: 619m³/h

Weight: 19Kg

Case: Grey polypropylene, seam welded

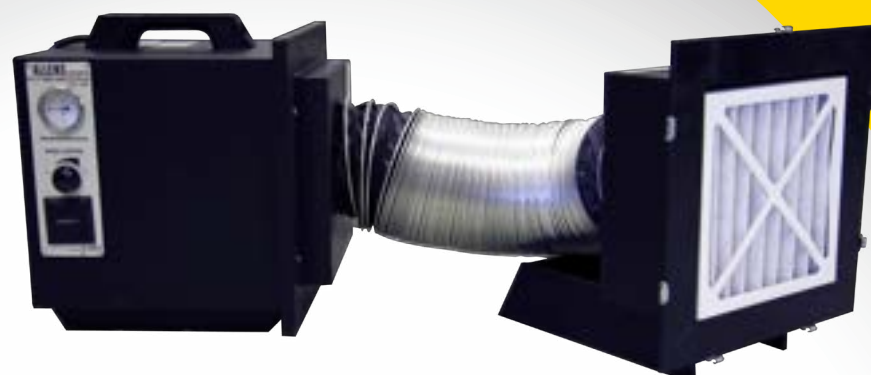
Electrical: 240V, 10amp RCD Protected



Roving Head

Roving Filter Box for NPU

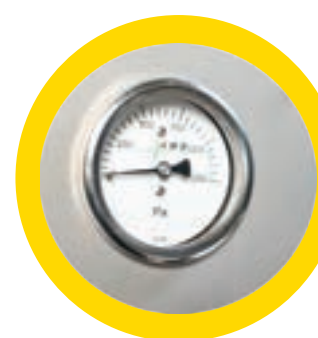
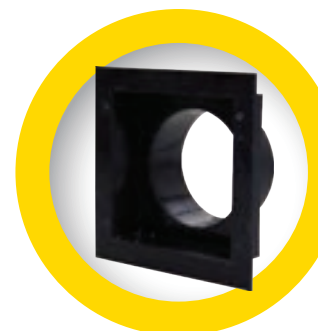
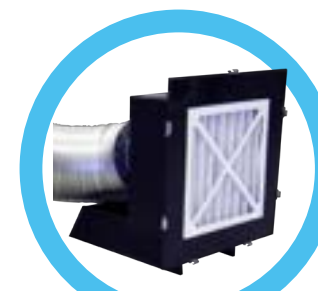
Roving heads complete with filters and ducting to suit all NPU models.



Medium NPU



LIGHTER, MORE
DURABLE, MORE
POWERFUL & MORE
EFFICIENT THAN
STEEL FABRICATED
UNITS



Roving Head

Roving Filter Box for NPU

Roving heads complete with filters and ducting to suit all NPU models.

AMS1500

NPU for medium enclosures.

This 'mid-range' NPU is designed specifically for small-to-medium size enclosures.

Single motor: 1000W

Dimensions 561 X 489 X 850mm

Weight 48kg

Airflow rate 2400m³/hour



FOR SMALL-MEDIUM
ENCLOSURES

AIRFLOW 2400 m³/hr

M-Large NPU



SMH2500

Case: Moulded polyethylene and Weldfree

Airflow: 2700 m³/hr (average)

Noise: <86 dbA when measured at 1m

Electrical: 1 x High capacity motor which runs on single phase 220/240v-50Hz supply

Prefilter: 1 x prefilter (450x450x98mm)

Hepa: 1 x H14 HEPA filter with an efficiency of 99.995% at 0.3 microns (457x457x292mm)

Weight: 46KG

The units are manufactured at an ISO 9001 quality assured site



WELD FREE MAKING IT EASY TO CLEAN AND LIGHT

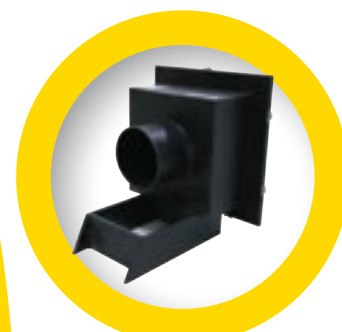
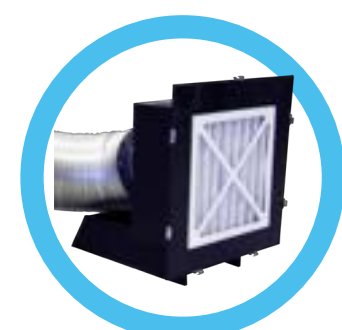
Its powerful motors provide a huge nominal airflow of 2700m³/hr for what is still a relatively compact size and lightweight. With particle filtration of 99.995% at 0.3 microns, the HEPA (High Efficiency Particulate Air) filter can clean contaminated air of potentially harmful particles such as asbestos, bacteria and some viruses.

SMH NPU2500 Silencer

12 Decibel reduction in noise

Self Supporting with braked castors

Carry Handles



Large NPU



AMS4000

NPU for large enclosures

The 'mid-to-top range' NPU

is designed specifically

for larger enclosures

Twin motor: 1000W ,10 amp

Dimensions 662 X 662 X 1055mm

Weight 70kg

Airflow rate 5200m³ /hour



LIGHTER, MORE DURABLE, MORE POWERFUL & MORE EFFICIENT THAN STEEL FABRICATED UNITS

Roving Head

Roving Filter Box for NPU

Roving heads complete with filters and ducting to suit all NPU models.

FOR LARGER ENCLOSURES

AIRFLOW 5200 m³/hr



Large NPU



SMH5000

TECHNICAL SPECIFICATIONS

Case: Moulded polyethylene and Weldfree

Airflow: 5500 m³/hr (average)

Noise: <86 dbA when measured at 1m

Electrical: 2 x High capacity motor which runs on single phase 220/240v-50Hz supply

Prefilter: 1 x prefilter (596x596x98mm)

Hepa: 1 x H14 HEPA filter with an efficiency of 99.995% at 0.3 microns (610x610x292mm)

Weight: 65KG

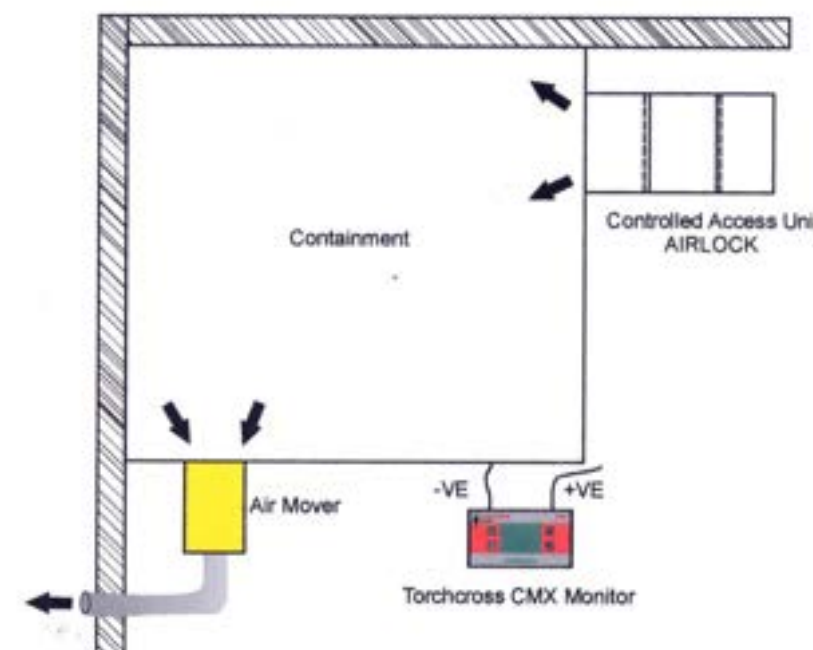
The units are manufactured at an ISO 9001 quality assured site



WELD FREE EASY TO CLEAN

Its powerful motors provide a huge nominal airflow of 5500m³/hr for what is still a relatively compact size and lightweight. With particle filtration of 99.995% at 0.3 microns, the HEPA (High Efficiency Particulate Air) filter can clean contaminated air of potentially harmful particles such as asbestos, bacteria and some viruses.

UNSURE HOW TO CALCULATE CUBIC METERS PER HOUR, AIRFLOW REQUIRED, AND WHAT SIZE OR HOW MANY NPU'S YOU WILL REQUIRE? THE BELOW CALCULATION SHOWS YOU HOW!



Air Flow Calculations

Step 1: Calculation of Volume (in Cubic Meters)

Length (m) x Width (m) x Height (m) = Volume (m³)

Example: 12m x 14m x 4m = 672m³ (Cubic Meters)

Step 2: Calculation of Airflow Required (Cubic Meters per Hour)

Take the volume of the area in cubic meters and multiply it by the number of airchanges required per hour. This gives you the airflow required in cubic meters per hour (m³/hr).

Calculation of Airflow Required (Cubic Meters per Minute)

Take the volume of the area in cubic meters and multiply it by the number of air changes required per hour divided by 60 minutes.

This gives you the airflow required in cubic meters per minute (m³/min).



Replacement Filters

Negative Pressure Units

Pleated Pre-filters

To suit all NPU models



IMPORTANT NOTE:

The Safe Removal Code and Australian Standards mandate periodic servicing and testing of H Class appliances.

When a HEPA filter(Class H14) is replaced in a unit a D.O.P test should be performed to ensure 99.995% filtration efficiency.

Refer page 55 for detailed information.

Exhaust Ducting

To suit all NPU models



Intake Foil Ducting

20cm / 30cm / 40cm diameter

Light & flexible, but won't crush down under high suction



Pressure Monitors

Electronic Monitoring

Omniguard 5

OMNIGUARD 511-OG5-M-INT - 5 With WIFI

Features of Omniguard 5:

- Simple to set up and use with 4.3 Color LCD touch screen interface
- Real time monitoring of differential pressure and/or vacuum level
- Built in cell modem lets you know whats happening at the job site automatically (May not work in your country).
- 95 decibel audible alarm notifies workers and bystanders when containment is lost
- Pressure displayed in Inches WC, Millimeters WC or Pascals
- Thermal printer, no ink ribbons
- Rugged self-contained unit includes power cord, owners manual, 10' of hose and spare paper roll stored in the case



Fog Machine

Fog Test Your Enclosures

Tough fog machine produces clouds of white fog on demand with the use of an illuminated 3m wired remote control. Features an adjustable mounting bracket, tough metal construction and fluid gauge. Requires fog fluid for operation - available separately.

Features:

- 240Volts operation
- 70 cubic metres/min fog output



Water Based Fog Machine Liquid

5 Litre
Water-based, non-toxic and leaves no oily residue.



NOTE:

SMOKE GENERATORS ARE FOR FOG TESTING ENCLOSURES AND **NOT** D.O.P TESTING!

Modular Wet Decontamination Units

**Quality fittings and hoses for quick release & set up.
All shower fittings included.
Rubber mats for slip resistance.**

Allens Modular Decontamination Shower Units comprise individual compartments which lock together using simple-to-use U-channel sections. Each modular compartment measures 1mtr (L) x 1mtr (W) x 2mtr (H). The side walls are constructed from 5.5mm metal wrapped polypropylene sheeting. The door frames use extruded aluminium framing. The roof panels are manufactured from aluminium with a translucent panel to allow light in. The floor panels are manufactured from aluminium for extra strength and include a shower mat for comfort. Each unit panel is numbered for ease of assembly.



**FLAT PACK FOR
EASY TRANSPORT AND STORAGE**

Modular units come apart for easy transportation and storage. Individual compartments lock together using simple-to-use U-channel sections.

Water Management Delivery & Waste

WATER MANAGEMENT SYSTEM

Delivers hot water for wet decontamination and extracts waste and filters in one easy to use system. The Allens Watermanagement System (WMS) is a fully automatic system complete with anti-tamper thermostatic controls, twin waste-water filters, connecting tubes and quick release brass couplers to and from the shower to the WMS. The 140 litre tank can supply continuous hot water to the modular shower system. Uses polypropylene rope wound filter cartridges. Dimensions 700mm X 600mm X 700mm
Weight 200kg
Volume 140 litres

Sediment Cartridges

Sediment Cartridges
For Pump Box and
Water Management System
250mm 25micron
/ 250mm 5micron



Pump Filter System

The PFS 30 is designed for medium scale pumping jobs, where its portability and high flow rate play to its advantage. The unit has a flow rate of 30 litres per minute and is fitted with two wound cartridge filters, which filter water of particles down to 25 and 5 microns.

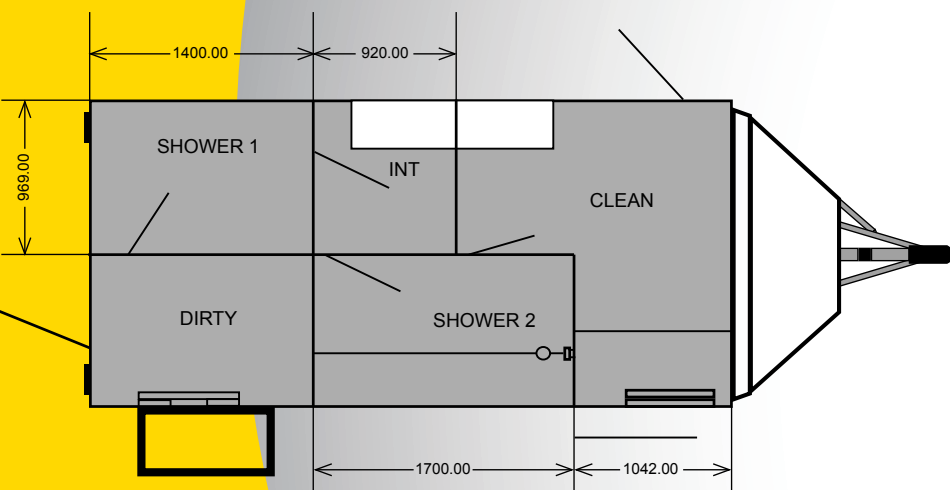


Decontamination Trailers

ALLENS Van Trailers

allow only authorised and trained personnel inside, all while being under negative pressure with an AMS500 Negative Pressure Unit providing sufficient air changes. Power access can be via the onboard generator or connected to mains supply. There are eight heavy duty lockers for personal belongings which are also fitted with power points for staff to store their Powered Air Respirator for overnight charging.

Built in the UK by some of the best engineers in Britain, these mobile Decontamination Units provide high quality, robust decontamination systems for projects both on site and in remote locations. Units can also be custom-built to suit your specific needs.



Allens "EXCEL" 5 STAGE FLOOR PLAN



DUAL AXLE FOR SMOOTHER TOWING ON AUSTRALIAN ROADS

Allens "EXCEL" 5 STAGE "AUSTRALIAN SPEC" DECONTAMINATION TRAILER

The Excel has it all – with features such as a gas hot water system capable of fast heating in all climates; onboard 150LTR litre clean water storage for remote locations or it can be coupled to mains water for a constant supply. A state-of-the-art Waste Water Filtration System filtering down to 5 microns; 2 showers; keypad door lock system to deter theft and

STANDARD ACCESSORIES



KEYPAD LOCKS



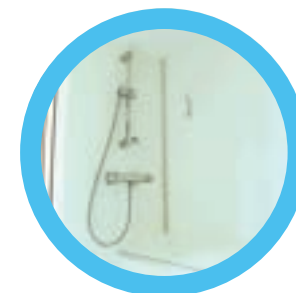
BUILT IN NPU



DIRTY END AIRLOCK



5 STAGE DECON



TWIN SHOWERS



CLEAN END AIRLOCK



LOCKERS FOR STAFF

MOBILE, SELF CONTAINED DECONTAMINATION TRAILER UNITS

MAKE YOUR TRAILER A "MOVING BILLBOARD" FOR YOUR BUSINESS!

BUILT IN NEGATIVE PRESSURE UNIT

BUILT IN WASTE WATER PUMP SYSTEM



3 Stage Decontamination Trailers

ALLENS Van Trailers

SMH Equipment 3 Stage Decontamination Trailer

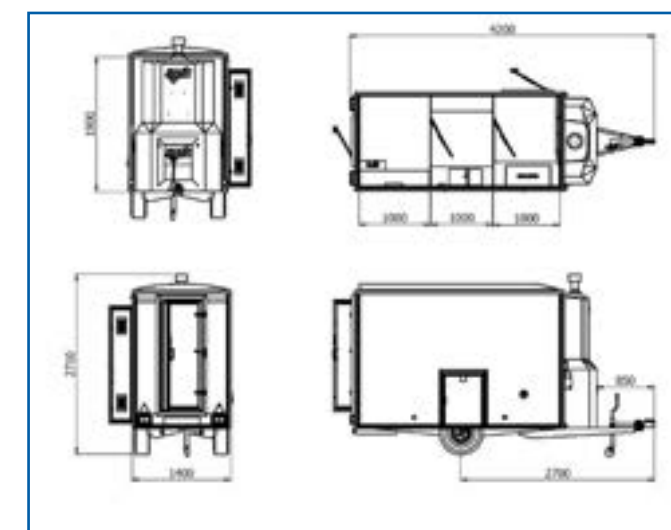
The decontamination trailer chassis is constructed completely out of galvanized rolled steel to give strength and provide long lasting durability. The floor is constructed out of WBP plywood, which is treated before being bolted to the chassis. The Floors are then finished in fibreglass for added water proofing.

The front of the decontamination trailer is aerodynamically enhanced, by the fitting of a fibreglass nosecone. All the services are contained within the nosecone giving more space in the clean end. Water is heated via a gas boiler, which is mounted internally in a housing located centrally in the clean end of the decontamination unit.

The decontamination trailer is divided into three compartments by the fitting of partitions. A bench seat and 900mm electric tube heater are provided in each end of the unit. In the clean end there are also eight coat hooks and eight lockers together with a fixed mirror. The lockers each have a socket to charge respirators.

Decontamination Trailer Features

- Gas hot water systems fitted
- GH2700 generator
- In built DOP Tested Negative Pressure Unit
- In built water tank
- Waste pump out through a 25 micron and 5 micron sediment filter
- Self closing door





3 Piece Decon Units

Metal Fabricated



NOTE:
PUMPED WASTE & WATER
MANAGEMENT SYSTEMS
SOLD SEPERATELY



Allens 3 Stage Wet Decontamination Unit

Standard features include:
(Also 1.0 x 1.0 x 2m or Custom size)
Dimensions: 800mm x 900mm Base
Welded and riveted.

- Heavy duty pop riveted construction from 2mm aluminium sheet metal
- Heavy duty curtains for effective airlocks between stages
- Heavy duty gaskets between stages
- Sloped and raised floors for easy, gravity fed waste water management
- Slip resistant rubber mats in all 3 sections
- Quality shower fittings
- Mirrors (For visual inspection of face and mask)

Customisable Features include:
• Polycarbonate ceiling windows to allow natural light
• Colour coded powder coating to suit your business colours
• Customised decals to advertise your firm
• Waste bag clips in airlock for waste coveralls and shoe covers.

LOCALLY FABRICATED, TOUGH, POWDER COATED ALUMINIUM CONSTRUCTION.

3 EASY CONNECT ONE PIECE CHAMBERS MAKE THIS UNIT QUICK AND EASY TO ASSEMBLE & MOBILISE!



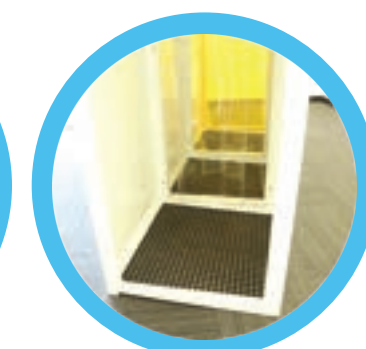
CUSTOM COLOUR & DECALS



SHOWER FITTINGS

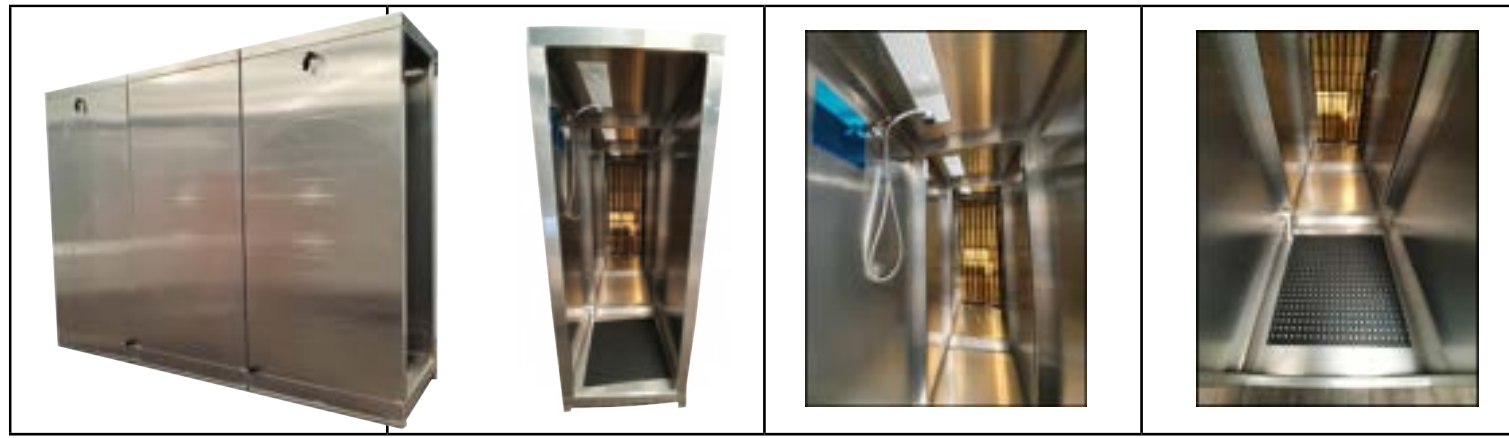


CEILING WINDOWS



SLIP RESISTANT MATS

Custom available



SMH Speedtent – Disposable Airlock System

Speedtent A disposable tent system

Suitable for use as a multi-stage airlock or decontamination shower system. It is ideally suited for the asbestos removal industry. Our innovative elasticated clips allow for the quick and easy attachment of the skin, and means the framework remains outside the skin so it does not become contaminated and can be used again.



Transit Tent Airlock System

Transient is a disposable tent system suitable for use as a multi-stage airlock. It is ideally suited for the asbestos removal industry.



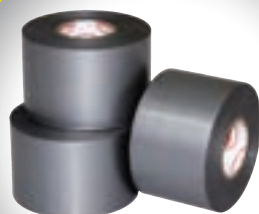
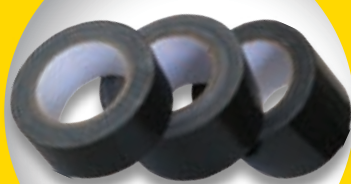
Speedtent

The Supertent represents a new and improved version of the typical traditional transient. Giving a more professional appearance due to its D-Door and built in flange to tape supertent to the enclosure. Used by contractors that wish to maintain the highest standards in all aspects of their site set up. Supertent pole

set – B000951

**Duct Tapes**

48mm X 30 metres

**Cloth Tape Black**48mm, 72mm, 96mm
- assorted sizes**Cloth Tape - Custom**

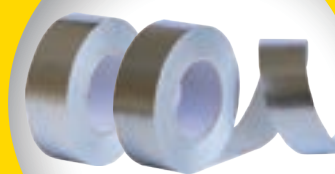
Custom colours & widths

**Double Sided Tape**

15mm x 50metres / roll

**Sisalation Tape**

High-Stick, cold weather tape

**Adhesive Warning Tape**

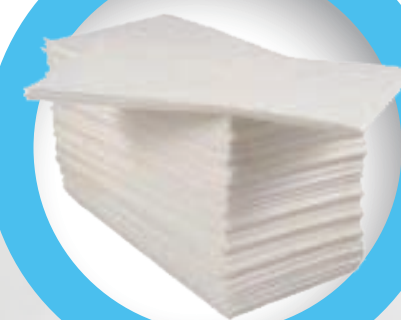
PVC - 50 metres / roll

**Wipes**WET WIPES, RAG REPLACEMENT,
COTTON RAGS, TAK RAGS**Sanitizing / Wet Wipes**

Hygienic Wipes 140mmX410mm 75/cannister

**Sprayglue500**SprayFix Adhesive Aerosol
500ml Spray can**Tak Rag**Dust Control Wipes 50 / Pack
Oil Impegnated**Cotton Rags**

Cotton T-shirt Rags - White

**Ultrasoft Disposable Towel**1220x700mm
60 per carton**Low Lint Wipes**

490mm x 70m or 245mm x 70m

AdhesivesSPRAY GLUES, PARTICLE BINDERS,
PUMP SPRAYERS**Pump Sprayers**

5 Litre and 8 Litre

**Paint Removal System**

5kg

**Particle Binder Concentrate**

Purple & Clear. Available in 5 Litre & 20 Litre.

**Particle Binder Concentrate**

Purple & Clear. Available in 5 Litre & 20 Litre.

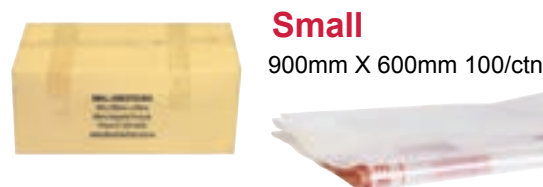
**ABC Fiberspray – Airless Spray Can**Asbestos Binding Compound in 8oz airless can
Enables application with minimal fibre disruption

Asbestos Waste Bags - Virgin

200 MICRON



ASBESTOS WASTE BAGS
200 Micron Virgin Material
 Printed & Approved Sizes
 Rolls & Flat Packed



Small
 900mm X 600mm 100/ctn

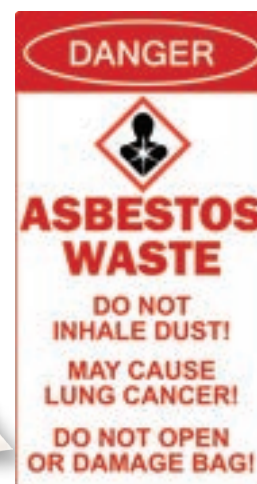


Medium 1100mm X 700mm 50/ctn

PREMIUM QUALITY
 200 micron
 VIRGIN PLASTIC
 APPROVED SIZES AS
 PER CODE OF PRACTICE
 PRINTED WARNING LABELS



Large 1200mm X 900mm 50/roll



Hazibag

BULK WASTE BAGS



100 Litre Hazibag
 0.7m x 0.25m x 0.6 m



200 Litre Hazibag
 0.4m x 0.6m x 0.85m



HAZIBAG 1m³
 Capacity 250kg
 1m X 1m X 1m
 Packing Group II & III Solid DG



2.5 Cube Long Hazibag
 3.1m x 1.47m x 0.52m



HAZIBAG 1.5m³
 Capacity 550kg
 2.5m X 1.5m X 0.4m
 Packing Group III Solid DG



HAZIBAG 3m³
 Capacity 1000kg
 2.5m X 1.5m X 0.8m
 Safety Factor test 6:1

HAZIBAG

- Certified for all "Packing Group III" Solid Dangerous Goods
- Made from grade 5 Polypropylene with 200 micron liner
- Durable / Standalone construction, fully sealable, lockable top
- Certified to transport without a steel container bin. No time restraints
- Compact pre-use packaging in a carry bag
- Extremely easy to use and in identifiable colour
- Perfect for contaminated equipment and UV rated
- Certified lifting device with 6:1 SWL Factor
- Environmentally friendly with no harmful emissions when burnt
- Clearly identifiable when buried if ever dug up



Poly Sheeting

200 MICRON PLASTICS BLACK PLASTIC FILM



1/4 X 50 Centre Slit

1 mtr folds out to 4 mtrs wide X 50 mtrs long 16 / pallet



2/4 X 50 Standard Roll

2 mtr folds out to 4 mtrs wide X 50 mtrs long 30 / pallet



Black Plastic
2/6mtr x 33m x 200um

CLEAR PLASTIC

(200 micron Virgin Plastic Labeled & Printed)



2/4 X 50 Standard Roll

2 mtr folds out to 4 mtrs wide X 50 mtrs long 30 / pallet



SINGLE ROLL, MULTIPLE ROLL AND PALLET BUYS AVAILABLE.

Flame / Fire Retardant Plastic



2/4 X 25mtr Flame Retardant

2 mtr folds out to 4 mtrs wide X 50 mtrs long 30 / pallet

CERTIFIED FLAME RETARDANT

Drum Liners

GENERAL WASTE BAGS / DRUM LINERS
(50-200um in varied sizes)



DTEX Poly Tarp (Ideal for enclosure floors)



1.8 mtr Woven Poly tarp

100mtrs long

Available in BLUE, BLACK & WHITE

Polytarp Benefits Double Laminated
Water and dust resistant for interior applications
Anti-Slip surface for safety
Can be used for temporary onsite weather proofing
Cost effective protection for easy clean up after construction

SpeedDock™

Vision Panels



FULLVIEW VISION PANELS

The dome shaped panel provides a full internal view of your enclosures!



Zip Wall BARRIER SYSTEMS



ZIPWALL®

The ZipWall® Barrier System was invented to provide a quick and easy way to set up a dust barrier. Contractors across all industries have given our products an enthusiastic thumbs-up. Our barrier system sets up in minutes. No tape, no ladders, no damage. It adds a professional touch to the job site.

The ZipWall® Barrier System was invented to provide a quick and easy way to set up a dust barrier. Contractors across all industries have given our products an enthusiastic thumbs-up. Our barrier system sets up in minutes. No tape, no ladders, no damage. It adds a professional touch to the job site.

You'll find ZipWall® products on the job in commercial and residential renovation settings, as well as in flood restoration, mould remediation, and many other applications. Since their introduction, ZipWall® products have received awards and recognition for innovation and quality. Today our products are available worldwide.

XPOWER 85L Dehumidifier



Moisture Removal Capacity
85L/Day (30C @ RH80%)
50L/Day (27C @ RH60%)
Power Supply 220-240V - 50Hz
Rated Power 990W
Rated Current 4.7A
Max Power 1370W
Max Current 6.4A
Max Suction Pressure 2.5MPa
Max Discharge Pressure 4.5MPa
Refrigerant R410A/0.74kg
Operating Temperature 5-35C
Drainage Hose & Pump
Weight 45kg

XPOWER X-3400

HEPA FILTERED AIR PURIFIER SCRUBBER



The XPOWER X-3400 HEPA Filtered Air Purifier Scrubber is a portable filtration system that draws air in from the surrounding environment and passes it through a series of filters to remove airborne contaminants such as particles, gases, chemicals, allergens, pollens, bacteria, mould, fumes, dust and more. They are commonly used on restoration jobs where airborne contaminants are present or will be created/disturbed during the restoration process, such as mould, dust, fumes, etc.

GREAT FOR NON-FRIABLE JOBS



Mintie ECU4



DEPLOY FASTER. SETUP EASIER. WORK SAFER

The new ECU4 is the next generation of the industry-leading ECU product line that redefines ease of use. The ECU4 features YKK #10 resin zippers, repositioned set up / release pins, upgraded internal operational springs, enhanced ball-bearing wheel assembly and wheels, double reinforced nylon floor, and reduced short side width to allow entrance to all patient rooms.

ECU4 Features Include:

- Reduced short-side width frame fits through 3' doors
- Lower service ceiling containment for sub 8-foot corridor
- Modular and scalable
- Single-unit, collapsible frame
- Interchangeable disposable envelopes available for frame
- Larger, sturdy wheel housings with ball-bearing assembly for durable service
- Light weight rip-stop poly fabric, flame-rated to U.S. ASTM E 84
- Four clear windows for better visibility
- YKK #10 Resin Zippers
- Double reinforced nylon floor
- Sidewall access (SA) flange
- Repositioned set up/release pins allow for easier setup and take down
- Available mobile platform lets you roll in your ladder and tools within the ECU for ultimate convenience

ECU4 Benefits

Large, Single Unit, Collapsible Frame

Reduced short-side width frame from ECU3, now fits through 3' doors

One person set up in 10 minutes



Fiberlock Technologies

ASBESTOS ABATEMENT ENCAPSULANTS, LOCKDOWNS & WETTING AGENTS



ABC Asbestos Binding Compound

ABC is a high solids asbestos encapsulant/sealant, to encapsulate friable Asbestos Containing Material (ACM) such as fireproofing and insulation. The high solids, nonflammable composition of ABC allows for dilution to provide flexibility for abatement needs, including lockdown/removal, penetrating encapsulation and bridging. ABC is also effective for controlling the hazard of exposure to asbestos fibers found in soil, without the need for bulky spray equipment. Available in Clear & White!

19 LTR DRUM



Lag - Kote II

Lag-Kote II is a thick bridging encapsulant/sealant for application over interior friable Asbestos Containing Material (ACM). It is suited to encapsulate interior pipe lagging, boiler jackets, breeching and other components of heating and ventilation systems. Its thick body minimises dripping, cleanup and product waste while providing a smooth, washable, finish. Lag-Kote II is flexible coating that can be applied over galvanised metal, masonry or other sound surfaces to prevent the release of harmful asbestos fibers. -Ideal for application to popcorn ceilings and interior transite

19 LTR DRUM

Lag - Kloth

Designed to repair and/or cover existing asbestos insulation on pipes. Lag - Kloth is a woven fabric impregnated with an adhesive to repair and/or cover existing asbestos insulation on pipes, boilers and breeching. Areas that are repaired or re-covered with Lag - Kloth can be successfully tap coated with Lag-Kote, Lag-Kote II or SerpiMastic for complete encapsulation. The self-contained, adhesive in Lag-Kloth is water activated, and non-flammable. Lag-Kloth can with, stand temperatures up to 600°F.

Available in three convenient sizes:

5' X 15' Blankets, 5' X 150' Rolls and 4" X 150' Tapes strips



TBC

Specifically formulated for transite encapsulation TBC Transit Barrier Compound is a white, elastomeric thermoplastic water based copolymer, blended specifically to seal exterior asbestos containing industrial Fiber Cement Board. TBC is a high solids, non-toxic blend of resins that forms a hard yet flexible finish which is ultraviolet resistant and midew resistant.

- UV & mold resistant
- Class "I" fire rated
- High solids, non-toxic formula
- Interior/Exterior

19 LTR DRUM



Grip - Tack

Tacky membrane designed to lock down residual hazardous materials. Grip-Tack is a clear, high solids, water based multipurpose lockdown/adhesive for capturing and sealing residual contaminants present before, during and after demolition or removal projects. Its unique formulation provides a soft, tacky, flexible membrane, which locks down asbestos fibers, lead paint chips and dust to ensure final clearance after the removal of lead and / or asbestos.

19 LTR DRUM



Wet-Wrap 'N' Seal

Water Activated encasement repair cloth. Wet-Wrap 'N' Seal is a permanent insulation encasement and repair system. It quickly covers pipes, breeching, valves, duct work and other fitting. Wet-Wrap 'N' Seal applies quickly and easily. Once dry, it permanently retains its strength, shape and form.

Available in 4", 6" and 8" X 9 foot rolls.

- Applies quickly and easily
- Free of fumes and odors
- High-strength
- Pre-cut to 9 ft. (2.7m) lengths
- One-step installation
- Saves time and labor
- No maintenance
- No special skills or tools required



SerpiFlex Multi-Use Asbestos Encapsulant

SerpiFlex Asbestos Encapsulant is a white, concentrated, water based vinyl acrylic product for bridging penetrating, removal, lockdown and soil encapsulation. It is non-toxic, non-combustible and does not contain any solvents or silicates.

- Can be used for all types of asbestos abatement, including encapsulation, lockdown, and removal
- Concentrated formula saves transportation and labor cost.

19 LTR DRUM



Fiberset PM

UL classified post removal surface sealant

Fiberset PM is a pre-mixed "lockdown" sealing for treatment microscopic residual fibers present after removal of Asbestos Containing Material (ACM). Available in white, blue or clear, Fiberset PM is a ready-to-use, Class "I" fire-rated coating that provides a flexible barrier over residual fibers to ensure final air clearance. Fiberset PM is UL classified for use as a primer for fireproofing replacement materials under the "Encapsulant Materials" section of the UL directory, and is compatible with leading brands of flooring adhesive. Fiberset PM is a water based, non-toxic coating that employs advanced 100% acrylic technology to extend the life expectancy of airless spray equipment.

- UL classified
- Class "I" fire rated
- Ideal for use as a pull-down
- Compatible with many floor adhesives

19 LTR DRUM

ABC Fiberspray

ABC Fiberspray provides the same formula found in ABC Asbestos Binding Compound in a convenient airless spray can. The airless spray can technology allows the product to be applied from any angle without disrupting friable asbestos fibers. This airless spray technology minimizes asbestos fiber release, and permits application of encapsulant in any position, even upside down (ideal for use inside glovebags). ABC is also effective for controlling the hazard of exposure to asbestos fibers found in soil quickly and easily, without the need for bulky spray equipment.

802 Cans



SerpiMastic High Temp Asbestos Encasement Coating

SerpiMastic is an off-white, high temp, water based, high solids, mastic coating. Two viscosity grades: Sprayable and Trowelable. SerpiMastic dries to a tough, weather-resistant coating that provides high temperature and impact protection for asbestos, cement asbestos board and thermal/insulations on boilers and pipes.

Environmentally safe. Weather, UV and chemical resistant. Extremely durable. Resists impact up to 160 psi. Trowelable version is ideal for painters mitt/ palm application

19 LTR DRUM

Glove Bag Systems

GRAYLING - AVAIL



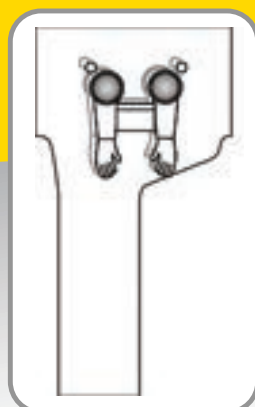
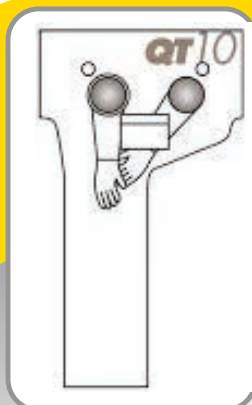
The AVAIL QuickTwist design has two distinct work zones, the removal area and the debris chamber. This two-stage design makes it safer and easier for workers to remove and securely separate debris-laden bags from pipe. The QuickTwist means less bunching is required to twist close the glovebag. The increased work area gives the worker greater freedom to access difficult pipe insulation. Each debris chamber is tall enough to handle intact sections of pipe insulation. After waste is funnelled into the chamber, the worker easily twists it closed at the top and tapes the neck to prevent escape of dangerous fibres. The QuickTwist debris chamber is more puncture and tear resistant than any other glovebag ever made. Made from PHD, a specially engineered polymer that incorporates all the strength and durability of low and high-density polyethylene.

All AVAIL bags come in a convenient box that protects the unused bags from damage due to handling. The bags are on a roll and can be cut off and used in sections of 1, 2, 3 or more.

QUICKTWIST (HORIZONTAL MODELS)



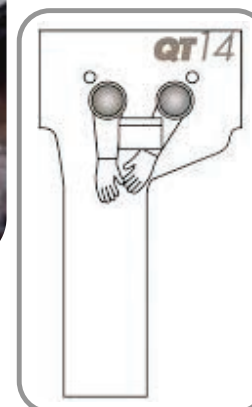
QT10
Fits pipe diameters up to 10".



QT18
Large pipe diameters from 14" to 18" are no problem for this QT18 model. Two sets of glovebags let the worker easily reach and remove pipe insulation.

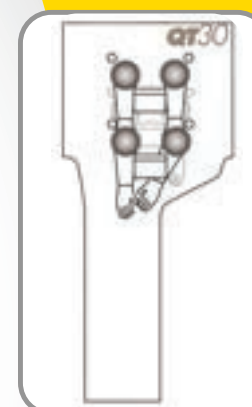


QT14
It safely encloses pipe diameters from 10" to 14".



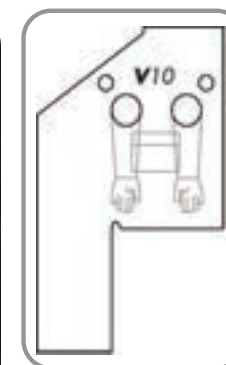
QUICK TWIST

The QuickTwist 1-2-3 debris chamber makes it easy for workers to securely and safely separate debris laden bags from pipe. The new design incorporates a narrower and taller waste area so that less bunching is required to twist close the glovebag. After waste is funnelled into the chamber, the worker easily twists it closed at the top and tapes the neck to prevent escape of dangerous fibres.

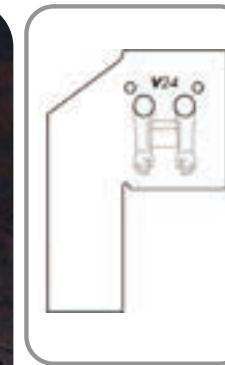


QT30
This super sized AVAIL model handles pipe diameters from 18" to 30". Three sets of glovesleeves let workers remove insulation on large diameter pipe.

VERTICAL MODELS



V10
This Avail glovebag sets the industry standard for efficiency on vertical pipe diameters up to 10". Each bag measures 60"x84". An offset debris area moves the weight and bulk away from the work area. One arm set, and ports per chambers, 6-mil construction.



V24
Perfect for work on larger diameter vertical pipe, accommodates diameters from 10" to 24". Each bag measures 84" to 96". An offset debris area moves the weight and bulk away from the work area. One arm set, and ports per chambers, 6-mil construction.

MAINTENANCE BAGS



M6
The M6 is for repair and maintenance operations where the work is on small sections of insulation or gasket replacement. For pipe diameters up to 6". Each chamber measures 22"x60" with one arm set with opposing glovesleeves, 6-mil construction.

HIGH TEMP GLOVE BAGS



The Therm-Equip glovebag products are specifically designed for high-temperature pipes and ducts. Therm-Equip Glovebags offer the ability to handle emergency repair and maintenance on active pipe and ducts. The bags eliminate the need for costly shut-downs. Therm-Equip Glovebags are available in three models to accommodate maximum pipe temperatures of 300°, 400° and 700°F. Each model is available in several different sizes to accommodate pipe diameters from 1" to 30", and for horizontal and vertical pipe.

Sundström

Negative Pressure Respirators

FULL FACE RESPIRATOR

The SR200 full face respirator provides very high protection at heavy-duty work for extended periods. The respirator offers added eye and face protection and a higher protection factor than half masks.

- Very high protection factor
- Two exhalation valves
- Valve caps with air diffusion
- Low weight
- Fabric head harness - no sticking rubber
- Unique curved visor for very wide and deep field of vision.
- Part of inhalation air is channelled across the visor to minimise mist forming
- Accepts all Sundström filters and compressed air attachments

Small Talk in-mask microphone

SmallTalk in-mask microphone and mini-amplifier/loudspeaker
Can be fitted to both SR100 Half Face & SR200 Full Face Masks.
If you can talk with your respirator fitted, there is no need to remove it.
SmallTalk is designed to make 100% wear-time possible.
No holes, no permanent attachments, no damage to your mask. SmallTalk can be fitted to your respirator in seconds, and removed without a trace.
That means there are no changes to maintenance or cleaning, either.

Asbestos Kit - SR100

Sundstrom P3 1/2 FACE Asbestos Respirator Kit. Available in S/M & M/L L/XL size.

Sundstrom Half Face "Asbestos Kit". Includes:

- SR100 Half Face Respirator
- Pack of SR221-5 Pre-Filters and
- Resealable, air tight container
- P3 SR510 Particulate main filter
- Pre-filter retainer



Sundström

Sundstrom Filters

SR 221-5

Pre-filters to suit all Sundström masks



SR 217



Organic gas filter class A1 Suit all Sundstrom Masks *If environment contains both particles and gas, a particle filter must be fitted to the front of the gas filter*

SR 510

P3 Filters to suit all Sundstrom half masks



SR 218



Organic gas filter class A2 Suit all Sundstrom Masks *If environment contains both particles and gas, a particle filter must be fitted to the front of the gas filter*

OTHER FILTERS AVAILABLE!

Sundström

Sundstrom PAPR “POWERED AIR”

SR700 / SR200 PAPR KIT

Powered particle respirator
SR200 Full face mask
Sundstrom P3 particle filters
Two speeds (225 & 175 l/min)
Up to 8 h operation
2 h recharge
Visual display
IP rated
Single-button control
Only 1.1 kg including battery, filters and waistbelt
Withstands wet decontamination

Very high protection level
Silicone material
Two exhalation valves
Air diffusion valve caps
Curved visor for great vision
Effective de-misting of visor
Use with PAPR, filters or supplied air
Optional voice communication
Heavy-duty use
Only 450 g
Ideal for wet decontamination



SUNDSTROM SR500 + SR200 PAPR

Sundstrom SR 500 PAPR unit with Sundstrom SR200 Full Face Mask.
All fan units come with 2 x Sundstrom SR510 particle filters, 10 x Sundstrom Pre-filters, 2 x Sundstrom Filter adaptors and 2 x Sundstrom Pre-filter holders.



SUNDSTROM SR 500 FEATURES

Two speeds (175 and 240 l/min)
Lithium-ion battery
Battery available as Standard (STD) or Heavy Duty (HD)
Battery recharge time: approximately 1.5 h (STD), 2 h (HD)
Supplied with 2 filters/filter combinations
Operating time up to 13 hours. (USED AND BLOCKED FILTERS MAY DECREASE BATTERY OPERATING TIME)
Single control for on, off and operating status
Automatic air flow control
The Sundstrom SR200 full face respirator provides very high protection at heavy-duty work for extended periods. The respirator offers added eye and face protection, and a higher protection factor than half masks.

SUNDSTROM SR 200 FEATUERS

Very high protection factor
Two exhalation valves
Valve caps with air diffusion (no clogging during spray jobs)
Low weight
Fabric head harness - no sticking rubber
Unique curved visor for exceptionally wide and deep field of vision
Part of inhalation air is channelled across the visor to minimise mist forming
Can easily be fitted with optional SmallTalk microphone and loudspeaker



SUNDSTROM SR500 Fan unit with standard battery & SR580 Helmet

The Sundstrom SR500 powered air purifying respirator (PAPR) is an alternative to negative-pressure filter respirators in situations where these are recommended. The fan-assisted air flow may be of benefit during extended periods of work in warm conditions.

Two speeds (175 and 240 l/min)
Lithium-ion battery
Battery available as Standard (STD) or Heavy Duty (HD)
Battery recharge time: approximately 1.5 h (STD), 2 h (HD)
Supplied with 2 filters/filter combinations
Operating time up to 13 h
Single control for on, off and operating status
Automatic air flow control



SCOTT SAFETY RFF4000 Full Face Mask

98% normal field of vision
Hard coat solvent and scratch resistant visor
LSR silicone face seal



Pro Mask Full Face Respirator

The Promask full face respirator is lightweight and ergonomically designed. Featuring a unique speech diaphragm, it aids transfer of audible speech and has a sweat port in the chin pocket providing added comfort.

- Halo-butyl elastomer face piece material
- T bar 5 point head harness for increased wearer comfort and fit
- Sweat port in chin pocket providing added comfort during extended wear times
- Quick release headband
- Wide sealing edge provides superior fit



SHIGEMATSU 05STS002

Breath Responsive PAPR "Synchro" Switchless

ON : The system starts automatically as you breathe.
OFF : It turns off 5 seconds after doffing.

Half Mask PAPR: Easy to wear and remove like negative pressure half mask, but offers the high protection as PAPR.
Silicone Facepiece: Specially designed silicone facepiece providing comfort and durability.

4-Point Head Harness: It gives more stability and firm fit.
AS/NZS 1716:2012
Ready to Go Kit including filter



SHIGEMATSU 05STS003/4

Breath Responsive PAPR "Synchro" Switchless

ON: The system starts automatically as you breathe.
OFF: It turns off 5 seconds after doffing.

Filter Replacement Indicator
An LED flashes when it is time to replace the filter.

6-Point Head Harness
It gives more stability and firm fit.

Speech Diaphragm
It enables you to communicate better at work.



Proflow PAPR "POWERED AIR KIT"



The Promask PAPR full face respirator provides comfort and protection and is lightweight and ergonomically designed. Featuring a unique speech diaphragm, it aids transfer of audible speech and has a sweat port in the chin pocket providing added comfort.

- Halo-butyl elastomer face piece material
- Outstanding speech transmission
- Easy disinfection, decontamination and maintenance
- T bar 5 point head harness for increased wearer comfort and fit
- Sweat port in chin pocket providing added comfort during extended wear times
- Quick release headband
- Slim-line design allows easy integration with helmets and earmuffs
- Wide sealing edge provide superior fit

Lightweight and compact the Proflow SC 160's ergonomic design incorporates a curved backplate which ensures user comfort for long periods.

Includes blower unit, battery, recharger, hose with DIN thread & padded belt, 160l/min.
• Continuous visible monitor of battery status and filter blockage
• Audible alarm for low battery and filter clogging
• Typical 10 hours use for a single charge
• NiMH high power battery with fast recharge
• Shower-proof construction enhances decontamination



Scott Pro2000
Gas Filter



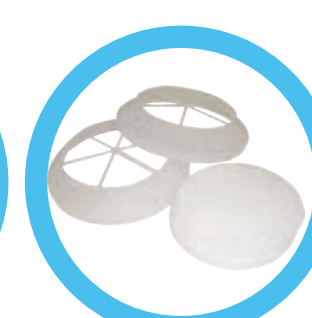
Scott P3 Filter



Pre-Filters



Filter Caps



Pre-Filter Holders

3M Negative Pressure



3M™ Asbestos/Dust Respirator Kit 7535, P2/P3*

Includes a 3M™ Half Face Reusable 7500 Series Respirator with efficient Cool Flow™ Valve and soft silicone mask material. The respirator design helps reduce fogging when wearing eye protection. 3M's unique solid top particulate filter casing design reduces premature caking and clogging from dirt, grime, water or dust. The protective casing also aids decontamination practices.

Kit Includes:

- 1 x 3M™ Half Face Respirator 7500 Series (available S, M & L sizes)
- 2 x pair of 3M™ Particulate Filters 6035 P2/P3*
- 1 x pair of 3M™ SecureFit™ 200 Series Safety Glasses, AS/NZS1337.1 Medium Impact
- 4 x 3M™ Respirator Cleaning Wipes 504
- 1 x 3M™ No-Touch™ Foam Earplugs P2000, Class 4 (SLC80: 25dB)
- 1 x 3M™ Respiratory Protection Guide
- 1 x Handy Storage Container

3M™ Asbestos/Dust Respirator Kit 6835, P3*

Includes a 3M™ Full Face 6000 Series Reusable Respirator that is simple and easy to use. The respirator is light weight, well balanced and provides a wide field of vision. 3M's unique solid top particulate filter casing design reduces premature caking and clogging from dirt, grime, water or dust. The protective casing also aids decontamination practices.

Kit Includes:

- 1 x 3M™ Full Face Respirator 6000 Series (available S, M & L sizes)
- 2 x pair of 3M™ Particulate Filters 6035 P2/P3*
- 4 x 3M™ Respirator Cleaning Wipes 504
- 1 x 3M™ No-Touch™ Foam Earplugs P2000, Class 4 (SLC80: 25dB)
- 1 x 3M™ Respiratory Protection Guide
- 1 x Handy Storage Container

3M AT010590548 - Versaflo TRM-307C with Helmet

High impact head, eye & face with respiratory protection from hot particles and some nuisance level gases and vapours

Ready to use kit with optional hearing protection

Coated visor provides added chemical and scratch resistance, outstanding optical clarity and exceptional field of view

Refreshing flow of filtered air delivered to the wearer, reducing the additional breathing effort especially important during periods of strenuous work

Suit a wide range of needs, industries and applications

A deflector allows users to direct the airflow inside the headtop for increased control and comfort

Balanced, lightweight helmet with fully adjustable head suspension for optimal fit and weight distribution

Battery Life: 10-12 Hours

Battery Type: High Capacity Lithium Ion - Rechargeable



Kit Includes:

- 1 x 3M™ Full Face Respirator 6800DIN Series (available S, M & L sizes)
- 1 x 3M™ Versaflo™ Powered Air Turbo, TR-300
- 1 x 3M™ Versaflo Lithium Ion Battery Pack, TR-332
- 1 x 3M™ Intelligent Battery Charger, TR-341
- 1 x 3M™ Versaflo™ Particulate Filter PAPR-P3, TR-3710E
- 1 x 3M™ Easy Clean Waist Belt, TR-327
- 1 x 3M™ Versaflo™ Airflow Indicator, TR-970
- 1 x 3M™ Disposable Coverall 4520
- 1 x 3M™ Versaflo Breathing Tube, BT-20L

3M Versaflo PAPR “POWERED AIR”



3M™ Versaflo™ 6800-TR Plus Belt Mounted Full Face Respirator Kit

Combines the comfort of the 3M Full Face 6000 Series Respirator with the industry proven lightweight 3M™ Versaflo™ Powered Air Respirator TR-300 creating an asbestos removal respiratory system that is easy to use and to decontaminate. The Versaflo 6800-TR Plus, with its many design and performance features delivers all day comfort and confident protection that may lead to increased productivity. With its slim, curved profile, the Versaflo TR-300 turbo is ideally suited for use in tight spaces.



3M Powerflow PAPR “POWERED AIR”



3M™ Powerflow™ 6800 Plus Face Mounted Full Face Respirator Kit

Robust and reliable protection against respiratory and eye hazards present in removal of asbestos. The powered air respirator supplies a refreshing breeze of filtered air over the face while eliminating the need to work at drawing breath through a filter.

Kit is a ready-to-use system and able to be worn in a decontamination shower.

Kit Includes:

- 1 x 3M™ Full Face Respirator 6800 (available S, M & L sizes)
- 1 x 3M™ Powerflow™ Air Turbo
- 1 x 3M™ Battery Pack
- 1 x 3M™ Battery Charger
- 1 x 3M™ Powerflow™ Particulate Filter PAPR-P3
- 1 x 3M™ Easy Clean Waist Belt, TR-327
- 1 x 3M™ Powerflow™ Decontamination Kit
- 1 x 3M™ Powerflow™ Airflow Indicator
- 1 x 3M™ Disposable Coverall 4520

THE PROTECTIVE MASK REINVENTED

CleanSpace is a major innovation in personal respiratory protection. It offers the protection of a powered respirator with the convenience of a negative pressure mask; providing benefits in safety and productivity.

- Powerful toroidal microturbine motor for airflow (>200L/min)
- Piezo resistive positive pressure sensor breathing for maximum protection
- The AirSensit™ System intelligently delivers air on demand
- Low profile silicon mask for maximum visibility
- Compact and light (600g), the unit sits nested at the back of the neck
- Positive pressure mask AirSensit™ intelligently delivers fresh air on demand
- Filters particulate (>0.3 micron), organic, inorganic and acid gas and vapours
- Reduces heat stress and mask fatigue by removing heat, moisture and CO2 in the mask
- Smart alarms alerts for a filter change or battery charge
- Soft silicone mask in several sizes ensures a reliable fit
- Particulate and gas filters; certified to TM3 P3
- Comfort over long periods: fresh air and soft silicone mask

Cleanspace Ultra Powered Air Respirator “BREATH RESPONSIVE”



Cleanspace Ultra HALF FACE PAPR

CleanSpace: Half face powered air respirator

A breath responsive, powered air purifying respirator, designed to provide comfortable respiratory protection against particulate and gas contaminants.

- Smart intuitive system and equipment compatible
- Simple to operate with one button and auto-standby mode
- Durable, reliable with few parts and no spares required
- Compatible with other safety or communication equipment
- Quick filter change: snap in and lock in
- Filter alarms ensure maximum filter use
- No maintenance or servicing
- Silicone mask and few parts are easy to clean

Visibility: low profile mask, clear & talk-thru ability

Compact: leaves the body free of battery packs, hoses and blower

Light (600g): ergonomic design nests the unit at the back of the neck

Mobility: no cables, hoses or heavy kit to catch or constrain

Simple: easy to put on and off with no tight strapping or belts

Respirability: no breathing resistance or fatigue



CleanSpace™
wearable protective masks



CleanSpace™
wearable protective masks

CleanSpace Ultra: Full face powered air respirator

Work effortlessly & comfortably over long periods with p3 protection cleanspace™ ultra powered p3 respirator with rating ip 66 designed for use in decontamination showers

SAFE: Fully certified positive pressure respirator with P3 TM3 filtration efficiency ensuring maximum protection in the workplace.

Breath responsive

Up to 8 hours run time

Portacount testing enabled

WEARABLE: Easy to wear

Effortless and comfortable

No hoses or heavy waist mounted battery packs.

Award winning lightweight design (500g) delivers

clean fresh air for a full shift.

SMART: Tough, reliable, cost effective

No servicing or maintenance and easy to clean

A simple onebutton system

CleanSpace compact design provides compatibility with other PPE.



Cleanspace Ultra FULL FACE PAPR



Scott S.A.R

SUPPLIED AIR RESPIRATORY

SCOTT
SAFETY



**Flowhood 2
PAPR Headtop**

The Scott Safety Flite is a first breath positive pressure airline breathing apparatus with the option of hip mounted 10 or 15 minute compressed air cylinder supply for escape from the most hazardous environments.

Ideal for extended working, restricted access areas, working in confined spaces, with the reassurance of an emergency supply air.

- Simple operation
- Adjustable and padded webbing bandolier harness for comfort and safety
- Used with Scott Safety Promask PP or Vision 3 Full Face Respirators
- Optional hip mounted escape cylinders
- Face Mask and Cylinders purchased separately
- Certified to AS/NZS 1716:2012



Sundstrom S.A.R.

SUPPLIED AIR RESPIRATORY

Sundström

Sundström SR200 Airline (A and B model)

The SR200 Airline comprises an SR200 full face mask supplied with air from an external source through a hose and a regulator on the user's belt. A standard filter of suitable type in the mask provides back-up protection in case of loss of air supply and protects the user while walking to and from the workplace. In enclosed work spaces, the equipment can be used without filter with the front hole plugged. The SR200 Airline has been specially designed for heavy-duty, prolonged work, or where pollutants are especially hazardous and a high degree of protection is required.

The air flow rate can be controlled by means of a regulator on the user's belt, allowing adjustments between approximately 150 to 320 litres/minute. The supply pressure to the regulator should be between 5 and 6 bar.



Honeywell S.A.R

SUPPLIED AIR RESPIRATORY

Honeywell

The Opti-Fit™ convertible full facepiece respira-

tor can be used for various respiratory applications including CF-SAR(-Constant Flow - Supplied Air Respirator) Wide viewing area offering distortion free visibility and optical clarity. Silicone skirt offers exceptional durability and comfort. All straps are attached to the rim of the facepiece, rather than the silicone skirt, to reduce pressure points and distortion of the sealing surface when tightened. Nose cup prevents fogging.



Clearflow 3 Filter System

Lightweight and easy to use filtering unit for supplied air respirators. Very resistant structure: durability of the product. High filtering efficiency for optimal protection.



Yellow Air Breathing Hose

(Optifit SAR) Medical grade PVC Air breathing hose, approved for use with the Optifit convertible SAR under AS/NZS 1716:2012

- Flexible and kink resistant
- Medical grade PVC
- Available in 10m, 15m, 20m & 30m lengths
- CE/JN Couplings
- Approved for use with the Optifit convertible SAR



Quantitative FIT - TESTING

ASSURED
equipment
SERVICES.PTY.LTD

QUANTITATIVE FIT TEST FOR RESPIRATORY PROTECTION YOU CAN TRUST

Passing a quantitative fit test proves that the facepiece is sized correctly and the person knows how to put it on correctly. The PortaCount Respirator Fit Testers offer:

- Faster fit testing, real-time feedback
- Enhanced training with real time fit factor
- Objective fit testing, eliminating the guesswork
- Fit test all types of respirators including
 - Disposable filtering-facepiece fit testing
 - Half-mask fit testing
 - Full-face fit testing
 - PAPR fit testing
 - SCBA fit testing

NOTE: FOR BEST FIT-TEST RESULTS, A "QUANTITATIVE" FIT TEST USING A PORTACOUNT MACHINE IS RECOMMENDED.



**WE
CAN FIT-TEST
YOU & YOUR
TEAM. ASK
FOR PRICING**



The Scott Safety Bitrex Fit Test Kit is a qualitative respirator fit testing system which uses the harmless bitter taste of Bitrex to determine if a respirator is properly fitted to a user.

The Bitrex Fit Test Kit may be used with tight fitting respirators. The kit includes test hood, 2 nebulisers, 6 sensitivity & 6 fit test solution applicators.

- Simple and easy to perform
- Ensures proper respirator fit
- Uses harmless Bitrex solution
- Loose fitting polyethylene, draw string test hood provides unrestricted movement
- Large 3ml clear plastic window for better visibility
- Two easy-to-handle nebulisers deliver proper solution amounts each time
- Ideal for tight fitting facepieces
- Meets all performance criteria for current AS/NZS



Qualitative FIT - TESTING

SCOTT
SAFETY

3M

3M™ Qualitative Fit Test Apparatus is designed for fit testing disposable and half face reusable respirators fitted with particulate or combination gas/vapour and particulate filters.

Features and benefits of 3M Qualitative Fit Test Kits

- Offers a fast and easy method for performing qualitative fit testing
- No calibration of equipment required
- No modification of facepiece required
- Test operator can be self-taught/instructed
- Each kit contains a hood and collar assembly, two nebulisers, sensitivity solution, test solution and detailed instructions—replacement solutions and accessories can be purchased separately.





Type 5 / Type 6 DISPOSABLE COVERALLS



Type 5 / Type 6 SMS OVERALLS are designed for workers involved in the stripping, clean-up or handling of asbestos. The dry particle suits provide protection to the full body against airborne solid particulates and meet Type 5 and Type 6 European Standards.

The coveralls feature breathable SMS fabric to help reduce the risk of heat stress; elasticated hood designed for optimum fit with respirators; elasticated waist, wrists and ankles; 3-thread overlapped seams. Two-way zipper with storm flap and adhesive strip. Available in Red, Blue or White in S-XXXL.



Disposable coveralls rated type 5, category 3 (prEN ISO 13982-1) or the equivalent meet this performance requirement. Coveralls with open pockets and/or Velcro® type fastenings should not be used, because these features become traps for fibres and are difficult to decontaminate.

The 3M™ Protective Coverall 4515 is disposable safety work wear made of lightweight, breathable polypropylene. Suitable for various applications, it helps provide basic barrier protection against certain light liquid splashes and hazardous dusts.

- Made with a breathable material that helps reduce heat build-up and promote comfortable wear.
- Elastic waist, ankles, and wrists for convenience and freedom of movement.
- Two-way zipper with storm flap for convenience and to help provide additional protection.
- Does not contain components made from natural rubber latex to help prevent reactions from



Flame-Retardant Type 5 / Type 6 DISPOSABLE COVERALLS

FLAME RETARDANT DISPOSABLE COVERALLS

Microgard 1500 PLUS FR is a highly breathable, flame-retardant and antistatic SMMS polypropylene non-woven coverall that is designed for protection from particulates and light liquid sprays or splashes.

Intended to be worn over heat- and flame-protective clothing, the coverall provides wearers with protection from particulates (Type 5) and non-flammable, non-pressurised liquid sprays or splashes (Type 6).

Features and benefits include: protection - flame retardant (EN ISO 14116 Index 1) and antistatic SMMS non-woven provides a good barrier to particulates and low hazard liquid sprays or splashes; comfort - air and water vapour permeable ('breathable') to help reduce the risk of heat stress; antistatic - tested according to EN1149-5; and optimised body fit - ensures full freedom of movement when worn over heat- and flame-protective clothing (EN ISO 14116 Index 2 or above).

Overboots & Decon Towels

Disposable Decontamination Towels

100/Cartron (0.9m²) / Towel



OVER BOOTS

Elasticated opening with tie fastening. Anti-static treatment. One size fits all.



Everguard Tack Cloths - 50 Pack

Everguard Tack Cloths can be used in any area for the removal of dust contamination. The Tack Cloth is an ideal tool in the fight against contamination and is available in a pack of 50 rags. The Tack Cloths are impregnated by special resin, which holds the dust elements, fibres and dirt. One size fits all.

Warning Signs

FOR ALL ASBESTOS REMOVAL WORKS.



600 X 400mm Poly



600 X 450mm Poly



450 X 600mm Poly



450 X 600mm Poly

A Frame Sign & Warning Stickers



A FRAME SIGN



STICKER
90 X 230mm



STICKER
50 X 110mm



75mm X 300mtr



75mm X 60mtr or
75mm X 300mtr

Barrier Tapes

IDEAL FOR:

- TRADES PEOPLE
- ASBESTOS ASSESSORS
- INSPECTORS
- ENERGY SUPPLIERS
- GOVERNMENT AGENCIES
- COUNCILS
- TRAINING ORGANISATIONS

Custom Kits!
Call or email
our helpful,
experienced
team for
pricing and
assistance!
Kits are fully
tailored to suit
different needs.

**STANDARD KIT**

- 1 x Yellow PVC tough kit bag 700x350x350mm
- 1 x Pack of 20 Uvex P2 disposable respirators
- 2 x Type 5/6 approved disposable overalls 2XL
- 2 x pair of heavy duty overboots
- 4 x 200um approved asbestos waste bags 900x560mm
- 1 x Silver duct tape 48mm
- 1 x Barricade tape "Danger Asbestos" 75mm x 60mtr roll
- 1 x Canister anti-bacterial wet wipes 75/pk
- 1 x Spray glue aerosol adhesive 500ml
- 1 x Box of disposable latex gloves 100/pk
- 1 x Clear safety glasses
- 1 x Black builders film drop sheet 2mtr x 2mtr

INTERMEDIATE KIT

- 1 x STANDARD KIT less disposable respirators plus
- 1 x Sundstrom half face re-useable mask kit
- 1 x A frame warning sign

PREMIUM KIT

- 1 x INTERMEDIATE KIT plus
- 1 x HZQ200 "H" Class vacuum
- 1 x 70ltr Wheelie Bin to house vacuum
- 2 x Large Asbestos Waste bags for vacuum

CUSTOM KITS

Call or email our helpful,
experienced team for
pricing and assistance!

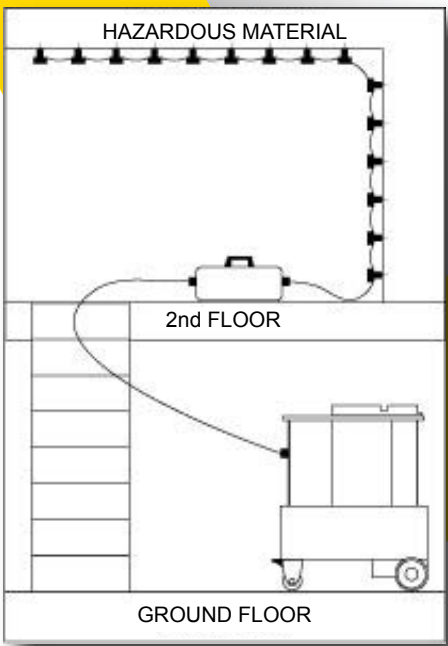


Asbestos Wet Injection Ststem

ASBESTOS WET INJECTION SYSTEM

BS8520-1:2009 COMPLIANT

The injection machine with its unique needle system is capable of delivering a consistent flow that can be set to operate on a timed cycle. The enviro-Vac system provides controlled injection of asbestos containing material. No adjustment required.



Model Number	Voltage	Filter Stages	Motors	Amps	Decibels	Dimensions H/W/L (mm)	Filter Grades	Kg
Wet Injection Unit	110/240	03	01	01	71	900 x 590 x 900	70 Micron	38



PRESSURE CONTROL BOX

This must be used with the main injection unit to maintain a flow of 35ml per minute through each needle.

Being lightweight and fitted with quick release hose couplings enables the unit to be used with ease at different heights.



Controlled injection of asbestos containing material using the Enviro-Vac delivery system.

TECHNICAL INFORMATION

- No adjustments required.
- Robust, durable, all plastic construction.
- Powerful efficient pump ensures maximum flow.
- Factory set pressure valve requires no adjustment ensuring minimum operator error.
- Wetting agent concentration can be altered to suit the material being removed.
- Three filters ensure the needles do not become blocked due to poor quality water supply.
- Translucent 100 litre tank with graduations.
- Self mixing chemical feature.
- Certificate of compliance showing needle test results.
- Does not rely on manual adjustment of flow rate from each needle.
- Needles can be added up to a maximum of 100 without affecting the flow rate giving greater flexibility.
- Replacement needles and needle assemblies are available to order from stock on our accessories page.
- Alarm feature to show loss of liquid flow.
- Spray application & single point injection.



Hydration & Cooling



COOLING NECK TIE



CHILLY VEST



HYDRATION BACKPACK



CHILL KING COOLING TOWEL

Height Safety



HEIGHT SAFETY



First Aid Kits



Electrical Accessories



Safety Footwear



Workwear



Head & Face Protection



Hearing Protection



Eye Protection



Safety Apparel



Hand Protection



Workplace Safety



Cleaning & Janitorial



Cleaning Machinery



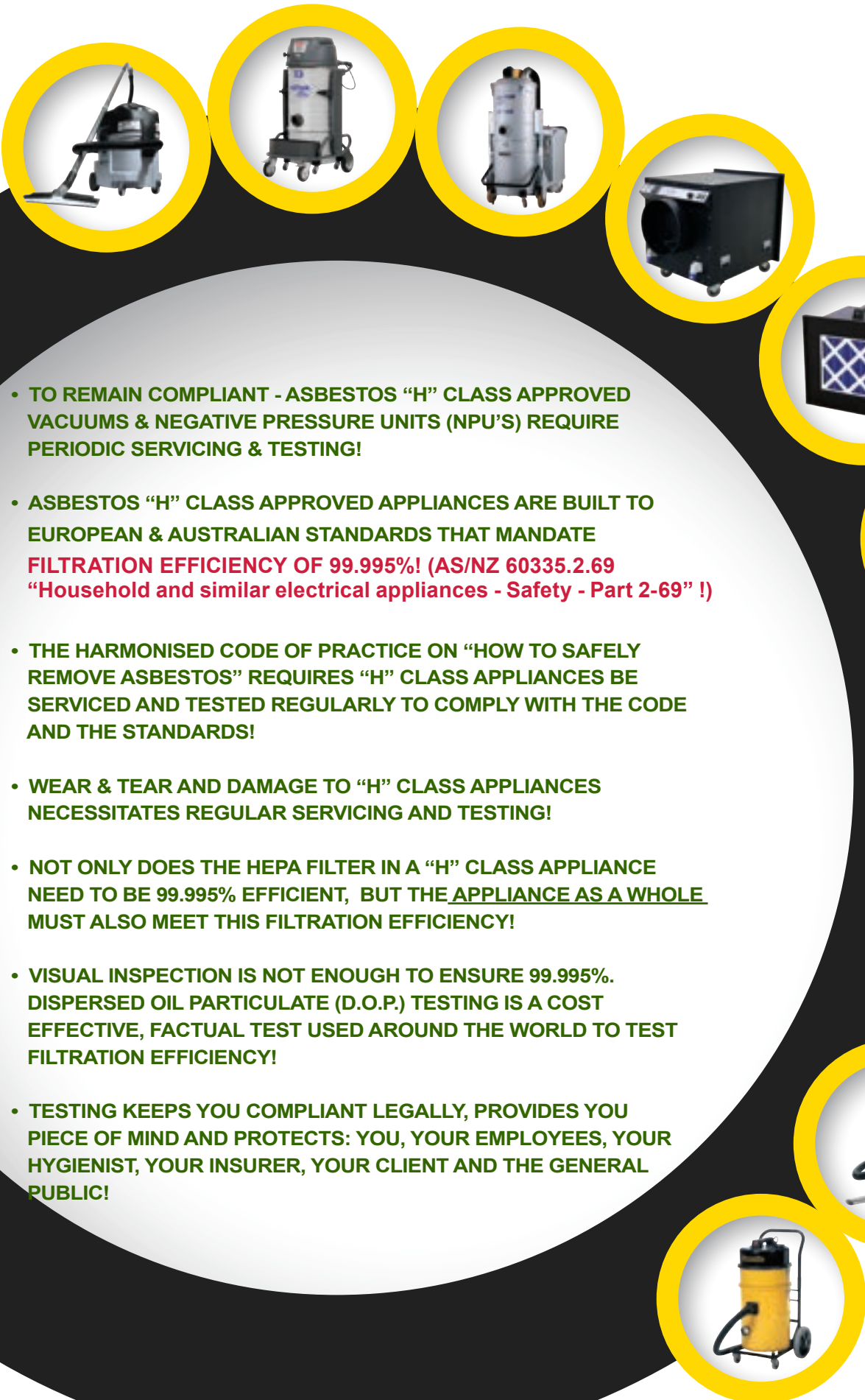
Uniform Issue
MANAGEMENT SPECIALISTS



Cleaning
CHEMICALS & WASHROOM PAPER



MAINTAINING, SERVICING & TESTING “H” CLASS APPLIANCES BE SAFE, BE COMPLIANT, BE ASSURED!



- TO REMAIN COMPLIANT - ASBESTOS “H” CLASS APPROVED VACUUMS & NEGATIVE PRESSURE UNITS (NPU’S) REQUIRE PERIODIC SERVICING & TESTING!
- ASBESTOS “H” CLASS APPROVED APPLIANCES ARE BUILT TO EUROPEAN & AUSTRALIAN STANDARDS THAT MANDATE **FILTRATION EFFICIENCY OF 99.995%! (AS/NZ 60335.2.69 “Household and similar electrical appliances - Safety - Part 2-69” !)**
- THE HARMONISED CODE OF PRACTICE ON “HOW TO SAFELY REMOVE ASBESTOS” REQUIRES “H” CLASS APPLIANCES BE SERVICED AND TESTED REGULARLY TO COMPLY WITH THE CODE AND THE STANDARDS!
- WEAR & TEAR AND DAMAGE TO “H” CLASS APPLIANCES NECESSITATES REGULAR SERVICING AND TESTING!
- NOT ONLY DOES THE HEPA FILTER IN A “H” CLASS APPLIANCE NEED TO BE 99.995% EFFICIENT, BUT THE APPLIANCE AS A WHOLE MUST ALSO MEET THIS FILTRATION EFFICIENCY!
- VISUAL INSPECTION IS NOT ENOUGH TO ENSURE 99.995%. DISPERSED OIL PARTICULATE (D.O.P.) TESTING IS A COST EFFECTIVE, FACTUAL TEST USED AROUND THE WORLD TO TEST FILTRATION EFFICIENCY!
- TESTING KEEPS YOU COMPLIANT LEGALLY, PROVIDES YOU PIECE OF MIND AND PROTECTS: YOU, YOUR EMPLOYEES, YOUR HYGIENIST, YOUR INSURER, YOUR CLIENT AND THE GENERAL PUBLIC!



99.995% EFFICIENT

HOW IS THIS DONE ?

SERVICING AND TESTING OF EQUIPMENT IS UNDERTAKEN IN OUR CONTROLLED ENVIRONMENT WORKSHOP

D.O.P. TESTING & AIRFLOW TESTING

DOP Testing: Provision of a Dispersed Oil Particulate (DOP) test to ensure that your equipment is operating at the required and maximum efficiency levels.

Airflow Testing: Airflow Testing of appliances to ensure optimum efficiency. (NOTE: NPU's only)

Please note that all appliances require decontamination in our wet room and visual inspection prior to DOP and Air Flow testing for health and safety purposes.

Service Records and Reminder Service

- Once your machinery has been serviced and tested by Assured, it will be entered into our customer database. Each service performed by Assured will be permanently recorded in our system.
- Information including service reports and test certificates will be available should copies be required.
- Upon each service, your machine will also be labelled with a Service Record sticker highlighting the machine's next service due date.
- We also provide our customers with service reminders to help you ensure your equipment remains safe and efficient for use at all times.

Transport Service

In the case that you are not able to drop your equipment into our premises directly, Assured Equipment Services are able to organise Australia wide transport of hazardous dust equipment and machinery through Chemcouriers Pty Ltd, a transport company specialising in hazardous goods. **Just ask us how .**

TEST CERTIFICATE

TEST CERTIFICATE		SAMPLE ONLY	
CERTIFICATE NUMBER:	40000000	ASSURED EQUIPMENT SERVICES PTY LTD	40000000
VALID FROM:	31/10/2012	VALID TO:	30/04/2012
CARRIED OUT FOR:	ABC COMPANY	ABC COMPANY	40000000
<p>WE HEREBY CERTIFY THAT THE TEST (S) ARE CARRIED OUT IN ACCORDANCE WITH CURRENT GUIDELINES FOR FILTER AND/OR ELECTRICAL TESTING FOR THE EQUIPMENT DETAILED BELOW. THE RESULTS ARE RECORDED AT THE TIME OF THE TEST.</p>			
TEST (S) CARRIED OUT:	DOP	PAT	AIRFLOW
<p>EQUIPMENT DETAILS:</p>			
MACHINE TYPE:	H CLASS VACUUM - NUMERIC	MODEL:	100000
SERIAL NUMBER:	12345	OTHER REF:	
<p>FILTRATION TEST RESULTS</p>			
FLOW OF THE TEST:	FULL	(MACHINE'S MAXIMUM)	
PENETRATION MEASURED DURING THE TEST:	0.000%	(RECORDED LEVEL)	
DOP MAXIMUM ALLOWED PENETRATION:	0.005 %		
TEST RESULT:	PASS		
<p>ELECTRICAL TEST RESULTS (✓ = PASS & X = FAIL)</p>			
VISUAL CHECKS (CASE, FUSE & LEADS)		EARTH/BOND TEST	
INSULATION TEST		FLASH TEST	
LEAD TEST		LEAKAGE TEST	
TEST RESULT:	NOT APPLICABLE		
<p>AIRFLOW TEST RESULTS</p>			
AIRFLOW	NA	m³/sec	
<p>CERTIFIED BY: ASSURED EQUIPMENT SERVICES PTY LTD</p>			
SIGNATURE:		NAME: TRISTAN ALLEN	PRINTED: 31/10/2012





FIT TESTING CENTRE



BRISBANE

(Head Office)
A: 40 Musgrave Rd
Coopers Plains QLD 4108
P: (07) 3277 3197

SYDNEY

A: 3 Metters Place
Wetherill Park NSW 2164
P: (02) 8103 5017

MELBOURNE

A: 72 North View Dr
Sunshine West VIC 3020
P: (03) 9081 0172

www.assuredequipment.com.au



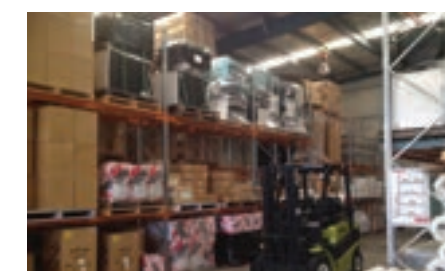
**WE SHIP
AUSTRALIA WIDE**



BRISBANE HEAD OFFICE: 40-46 MUSGRAVE RD COOPERS PLAINS QLD 4108



SYDNEY: 3 METTERS PLACE WETHERILL PARK NSW 2164



MELBOURNE: 72 North View Drive Sunshine West VIC 3020

